

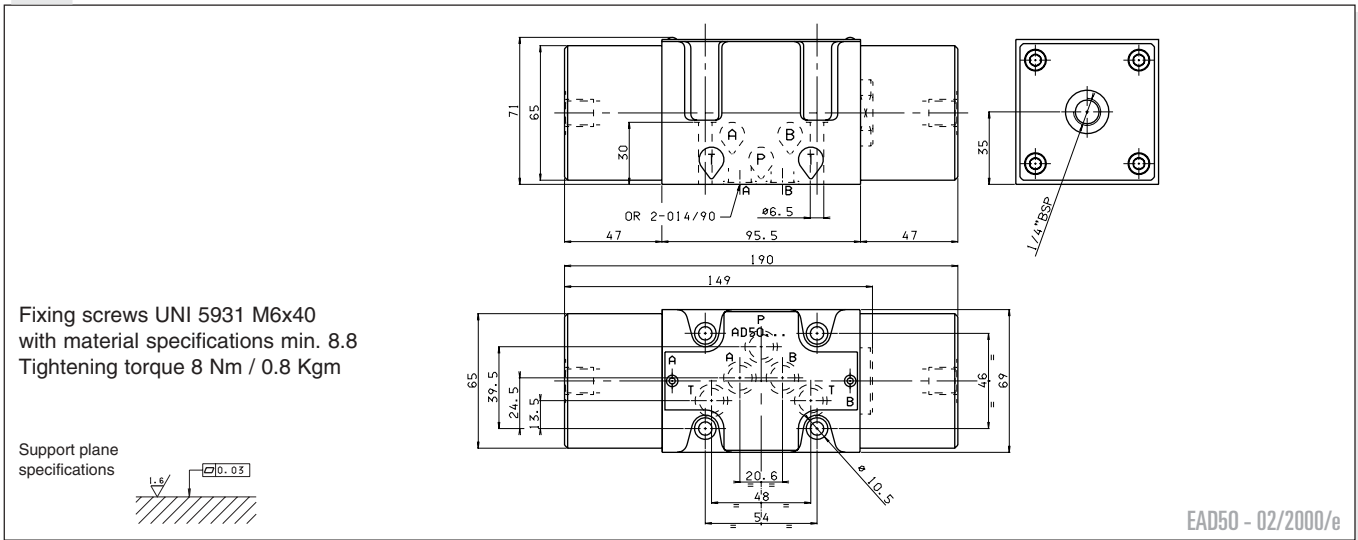


Max. pressure ports P/A/B	320 bar
Max. pressure port T	160 bar
Max. flow	100 l/min
Min. operating pressure	4 + [0.027 x (pt*)] bar - see note
Max. operating pressure	200 bar
Fluid viscosity	10 ÷ 500 mm ² /s
Fluid temperature	-25°C ÷ 75°C
Ambient temperature	-25°C ÷ 60°C
Max. contamination level	class 10 in accordance with NAS 1638 with filter β ₂₅ ≥ 75
Weight (single pilot)	4,1 Kg
Weight (twin pilot)	5,4 Kg

- Possible mounting: C / D / E / F / G / H / I / L / M
- Ordering code see page I*29

(pt*) = Pressure at port T

OVERALL DIMENSIONS



Max. pressure ports P/A/B	320 bar
Max. pressure port T	20 bar
Max. flow	100 l/min
Operating force - see note (*)	8 Kg - see note (**)
Fluid viscosity	10 ÷ 500 mm ² /s
Fluid temperature	-25°C ÷ 75°C
Ambient temperature	-25°C ÷ 60°C
Max. contamination level	class 10 in accordance with NAS 1638 with filter β ₂₅ ≥ 75
Weight	3,8 Kg

- Possible mounting: E / F / G / H
- Ordering code see page I*29

(*) Notes:
(*) In the absence of counter-pressure at port T

(**) 10 Kg with a pressure of 20 bar at T

OVERALL DIMENSIONS

